

SINCE 1985

GRINDING WHEEL MAKING PLANT



 **KUMYANG HI-TECH**

Grinding Wheels

Grinding wheel facility plant shall be divided into OFFSET facility, CUTTING WHEEL facility and V.I.T. manufacturing facility.



KACM-300 AUTO CUTTING WHEEL MACHINE

- Hydraulic down-stroke presses with three columns
- Electric table drive with 10 working stations
- Following processes are progressed in one cycle: first material feeding and leveling, glass fiber feeding and lighting heat, glass fiber prepressing, second material feeding and leveling, labeling bushing, main pressing, product, knock, etc...
- Air consumption: 5-7kg/cm² - 200 liter/minute
- Capacity: 1,300-1,500 pcs/day (8/h) · Approx weight: 14,000 kg
- Setting area dimension: 5.5m X 7m · Power consumption: 23kWh

DESCRIPTION	USE	MAXIMUM	NORMAL
PRESSING FORCE		300 ton	230 ton
HYDRAULIC PRESSURE		210 kg/cm ²	160 kg/cm ²

KACM-300 手动-自动磨片切片压力机

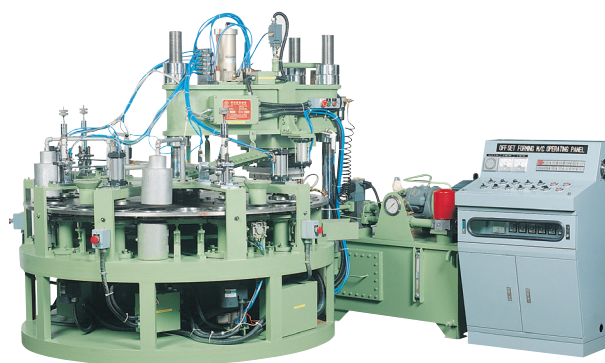
- 規法
面 积: 5.5m X 7m X 3m (长 X 宽 X 高)
重 量: 14,000 kg
用 电 量: 23kW/h
压 缩 空 气: 5-7kg/cm² - 200 liter/minute
- 10个工字一个周期
投 枚 原 料, 填 平, 投 入 玻 璃 纤 维,
玻 璃 纤 维 加 热, 加 压 后 再 投 入 二 批 原 料,
填 平, 可 调 整 手 动
或 自 动 方 式 亲 贴 商 标 及 生 产 制 品

· 生产墨: 1,300-1,500 pcs/day (8/h)

使用方式	最大	普通
压力	300 ton	230 ton
油压	210 kg/cm ²	160 kg/cm ²

KADM-4/7/9 ROTARY PRESS

- For the production of offset disk and grinding wheels, cutting wheels.
- Diameter ranges: KADM-4: 100mm (4"), KADM-7: 80mm (7")
KADM-9: 230mm (9")
- Capacity: KADM-4: 3,000 pcs/day (8/h)
KADM-7: 2,500 pcs/day (8/h)
KADM-9: 2,000 pcs/day (8/h)
- Pressing force: KADM-4: 38 ton, KADM-7: 53 ton,
KADM-9: 140 ton
- With appertaining fully automatic discharging handling



KADM-4/7 型全自动, 半自动磨片, 切片压机

- 制品规格: 100mm (4"), 180mm (7")
- 功 位: 24 功 位 (4"), 20 功 位 (7")
- 压机压力: 38 吨 (4"), 53 吨 (7")
- 班 产 量: 3000 片 (8 小时) (4")
2500 片 (8 小时) (7")
- 压机自重: 2.5 吨 (4"), 3.5 吨 (7")
- 所需电力: 10.8 kW (4", 7")
- 压机体积: 2m X 1.6m X 1.4m (4")
2.3m X 1.8m X 1.57m (7")
(长 X 宽 X 高)
- 送备特征: KADM-4/7 型全自动,
半自动压机为自动投料,
自动加网片圈及商标,
全自动液压控制

KADM-9 厦盒型全自动磨片, 动片压机

- 制品规格: 230mm (9")
- 功 位: 20 功 位
- 班 产 量: 2000 片 (8 小时)
- 压机压力: 140 吨
- 压机自重: 5.5 吨
- 所需电力: 13.5 kW
- 压机体积: 2.85m X 2.36m X 2m (长 X 宽 X 高)



KMM - 200 SINGLE / DOUBLE MIXING MACHINES

- For dry and wet mixing of vitrified and resinoid bonded compounds
- Capacity: 200kg/batch
- With inclined working position, electric drum drive, rotating mixing blades and hydraulic tilting movements.



KMM-200 型双锅混料机

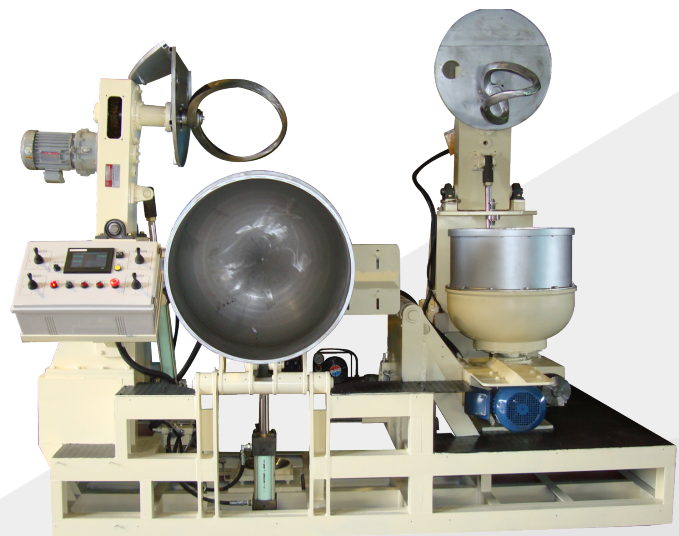
- 用途: 混合树脂混剂原料
- 混料量: 每次可混 200公斤
- 混料机体积: 2.1mX1.2mX1.36m
- 自重: 1.5吨

KMM-200 型双锅混料机特征

- 特点: 锅旋转时, 锅盖上的桨片与锅向着反相旋转在短时间内完成均匀混料. 随后由液压操纵系统将混合料从第一个锅移到第二个锅内再混合.

KWM - 50/75/100 W-TYPE DOUBLE MIXING MACHINE

- For the purpose of material mixing for the manufacturing of cutting wheel and offset
- Working method: Mixing powder material in the first mixing cauldron and input into second mixing cauldron
- After mixing liquid state material in the mixing cauldron, it can be automatically flowed through screen mesh
- Container type: W-Type cauldron
- Blade type: U-Type
- Machine operation method is as same as the one of model KMM - 200 double mixing machine

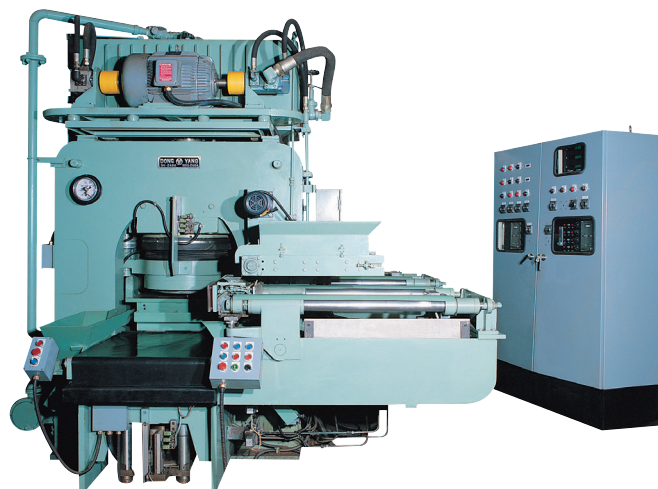


Grinding Wheels

Grinding wheel facility plant shall be divided into OFFSET facility, CUTTING WHEEL facility and V.I.T. manufacturing facility.

KCWP - 350/500 CUTTING WHEEL PRESS

- For the production of resinoid cutting wheels
- Wheel diameter ranges:
KCWP-350:305, 350mm(12, 14")
KCWP-500:350, 405mm(14, 16")
- Capacity:
One cycle: 1,500 pcs/day(8/h)
Two cycle: 1,200 pcs/day(8/h)
- Hydraulic down stroke presses with automatic charging.



KCWP-350 型与500型树脂切割片压机

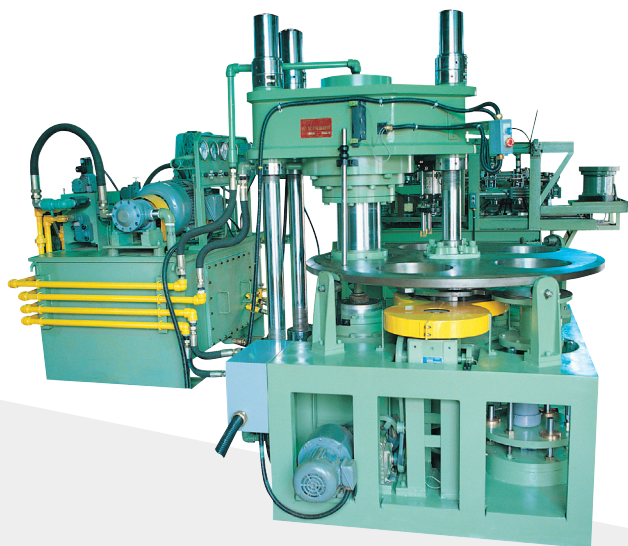
KCWP-350型树脂切割片压机

- 压力:350吨
- 生产规格:305mm, 350mm(12", 14")
- 班产量:单工位:1500片(8小时)
二工位:1200片(8小时)
- 压机规格:2.3mX2.2mX2.6m(长X宽X高)
- 压机自重:12.5吨

KCWP-500型树脂切割片压机

- 压力:500吨
- 生产规格:305mm, 405mm(14", 16")
- 班产量:单工位:1500片(8小时)
二工位:1200片(8小时)
- 压机规格:2.6mX2.5mX2.9m(长X宽X高)
- 压机自重:14吨

- 特点:这两种型号压机采用自动供料装置,自动注油加压,切片厚度偏差极小,公差可达 1/100mm,平衡度高,用按钮进行操作,操作简便,生产效率高,微调装置罩也能简单调节,不熟练工人也很容易操作.

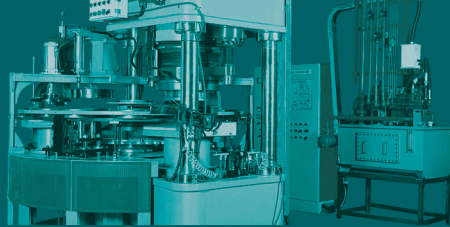


KVRP - 120/200 VITRI-ROTARY PRESS

- For the production of vitrified grinding wheels
- Pressing diameter:KVRP-120:150-200mm(6-8")
KVRP-200:200-300mm(8-12")
- Hydraulic down stroke presses with three columns and turntable.
- Pressing thickness:KVRP-120:Max.32mm
KVRP-200:Max.50mm
- Capacity:800pcs/day(8/h)

KVRP-120/200 型号陶瓷砂轮旋转压机

- 压制直径:KVRP-120型:150-200mm(6-8"), KVRP-200型:200-300mm(8-12")
- 压制厚轮:KVRP-120型:最大32mm厚, KVRP-200型:最大50mm厚
- 班产量:800片(8小时)
- 压机压力:KVRP-120型:120吨, KVRP-200型:200吨
- 压机体积:KVRP-120型:1.5mX1.8mX2.19m
KVRP-200型:1.8mX2.4mX2.01m
- 压机自重:KVRP-120型:6吨, KVRP-200型:8吨
- 设备特征:旋转式三柱液压压机



KODM-660 OUTSIDE DRESSING MACHINE

- For the dressing of outside grinding wheels
- Dressing diameter : 320 - 660mm
- Dressing thickness : Max. 450mm
- Hydraulic down stroke dressing with two rotating under spindles

KODM-660 外柱修整机

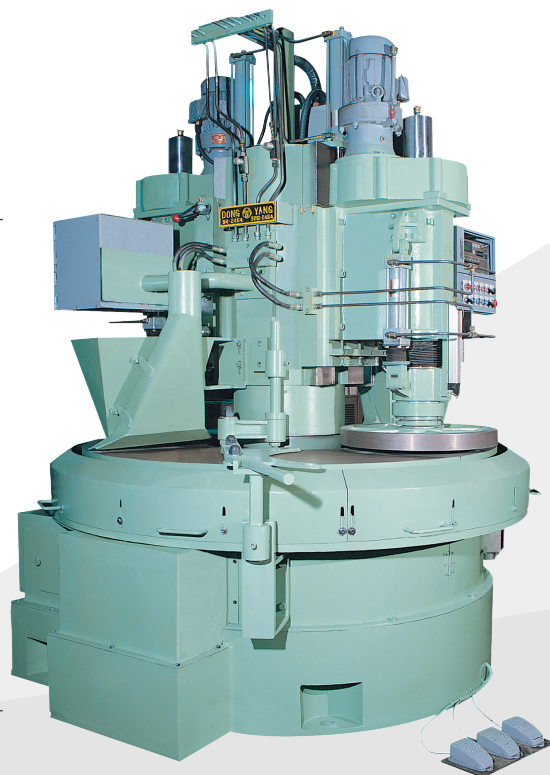
- 用途:修整磨轮表面的机械
- 修整范围:320-660mm
- 厚度:最大450mm
- 特点:使用2个油压机

KPDM-950, 1250, 1950 PLANE DRESSING MACHINE

- For the plane-parallel dressing of grinding wheels by means of steel-grit
- Dressing diameter ranges : KPDM 950 : 100 - 320mm
KPDM 1250 : 100 - 450mm
KPDM 1950 : 150 - 660mm
- Dressing thickness : KPDM 950 : Max. 80mm
KPDM 1250 : Max. 120mm
KPDM 1950 : Max. 150mm
- Hydraulic down stroke presses with two spindles and turntable.

KPDM-950, 1250, 1950 平面修整机

- 用途:使用研剂修整平面
- 厚度: KPDM 950 : Max. 80mm
KPDM 1250 : Max. 120mm
KPDM 1950 : Max. 150mm
- 修整范围: KPDM 950 : 100 - 320mm
KPDM 1250 : 100 - 450mm
KPDM 1950 : 150 - 660mm
- 特点:使用二个油压机及旋转平台



Grinding Wheels

Grinding wheel facility plant shall be divided into OFFSET facility, CUTTING WHEEL facility and V.I.T. manufacturing facility.



KVDM-450 OUTSIDE DRESSING MACHINE

- For the dressing of outside grinding wheels
- Dressing diameter: 250 - 450mm
- Dressing thickness: Max. 350mm
- Hydraulic down stroke dressing with two rotating under spindles

KVDM-450 外柱修整机

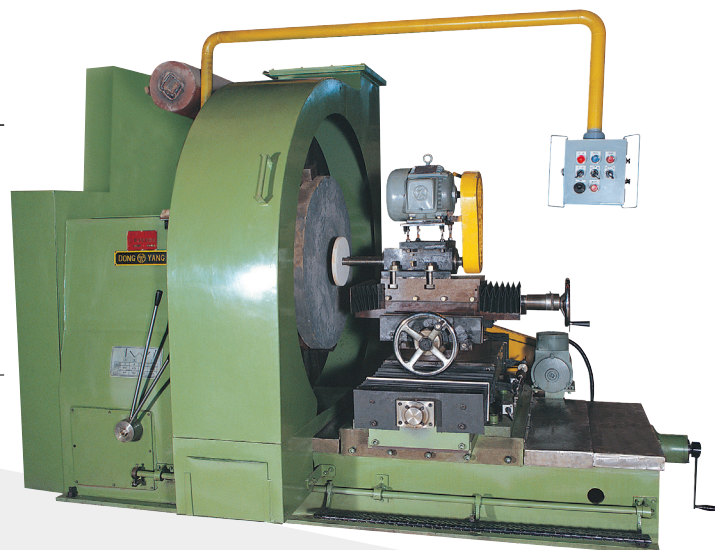
- 用途: 修整磨轮表面的机械
- 修整范围: 250 - 450mm
- 厚度: 最大350mm
- 特点: 使用2个油压机

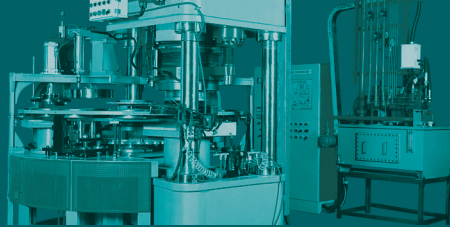
KVDM-1050 VERTICAL DRESSING LATHE

- For the dressing of inside and both side grinding wheels
- Grinding wheel diameter ranges 600 - 1,050mm
- Wheel thickness: Max. 300mm
- Drive motor: 3,7kW with the speed controller

KVDM-1050 平面修整机

- 用途: 修理两边平面之机械
- 修整范围: 600 - 1,050mm
- 厚度: 最大300mm
- 驱动马达: 3.7kW
- 特点: 使用调速机





KEO-4000 ELECTRIC OVEN

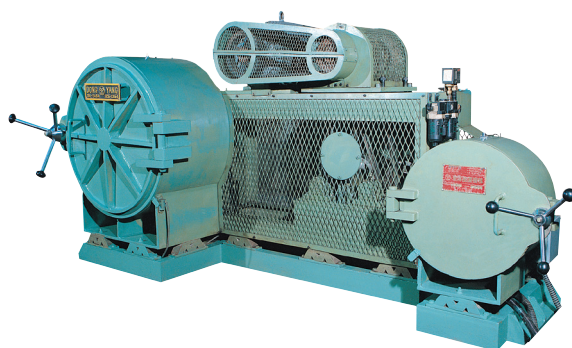
- For the drying - firing of offset disk and grinding wheels
- Heater capacity: 34kW
- Contain volume: 4m³ (2,000L X 1,300w X 1,500h)
- Heating temperature: 180 - 200°C

KEO-4000 型磨片, 切片干燥炉

- 烘炉热容量: 34kW
- 炉内温度: 180-200°C
- 炉容积: 4m³ (2000L X 1000w X 15h)
- 炉体积: 1.3m X 2m X 1.5m
- 炉自重: 1.2吨
- 升温速度: 每小时30°C
- 设备特征: 每炉所装数量视产品规格不同, 如“4”磨片可装14000片, 7”磨片可装7000片, 9”磨片可装4000片

KSTM-450 SPEED TESTING MACHINE

- For testing the circumferential speed and tear resistance of grinding wheels
- Testing diameter ranges: Small size: 180, 200, 250mm (7, 8, 10")
Large size: 300, 350, 400mm (12, 14, 16")
- Testing thickness: Small size: Max. 20mm
Large size: Max. 50mm
- Testing speed: 12,000 - 16,000 rpm



KSTM-450 测速机

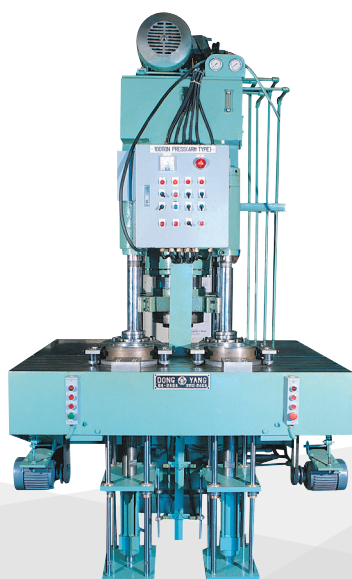
- 用途: 测定旋转速度与抵抗力的机械
- 产品规范: 小型: 180, 200, 250mm (7", 8", 10")
大型: 180, 200, 250mm (12", 14", 16")
- 厚度: 小型: max. 20mm
大型: max. 50mm
- 测定速度: 12,000 - 16,000 rpm

KVAP-60/150 VITRI-ARM PRESS

- For the production of vitrified grinding wheels
- Pressing diameter: KVAP-60: 150-200mm (6-8")
KVAP-150: 200-300mm (8-12")
- Pressing thickness: KVAP-60: max. 25mm
KVAP-150: max. 40mm
- Capacity: 700pcs/day (8/h)
- Hydraulic down stroke presses with four columns and two arms movements

KVAP-60/150 型陶瓷砂轮立式压机

- 压制直径: KVAP-60型: 150-200mm (6"-8")
KVAP-150型: 200-300mm (8"-12")
- 压制厚轮: KVRP-60型: 最大25mm厚
KVRP-150型: 最大40mm厚
- 班产量: 700片 (8小时)
- 压机压力: KVAP-60型: 60吨
KVAP-150型: 100吨
- 压机体积: KVAP-60型: 1.5m X 1.3m X 2.7m
KVAP-150型: 1.8m X 1.55m X 2.9m
- 压机自重: KVAP-60型: 3.2吨
KVAP-150型: 4.5吨
- 设备特征: 四柱两臂移动式液压压机





ADD

70-1, Gonghang-ro 393 Beonga-gil,
Gangseo-gu, Busan, Korea

TEL

+82)51-941-3464

FAX

+82)51-804-3464

E-MAIL

kyim0700@naver.com

WEB SITE

kyht.co.kr

PRINTED

Aug. 2018